



PILSEN

POWERCHAIROPEN 2025

INVITATION



**TOGETHER
WITHOUT BORDERS**



17-21/4/2025



PILSEN | CZECH REPUBLIC



WWW.PILSENPOWERCHAIROPEN.COM



PILSEN

POWERCHAIROPEN 2025

INVITATION

Dear Friends of Powerchair Hockey,

It is a great pleasure to welcome you to the second edition of the Pilsen Powerchair Open, which will take place from 17 - 21 April 2025. After the success and positive feedback of the first edition in 2024, we are excited to begin preparations to once again offer players, coaches, assistants and fans another sporting experience.

The Pilsen Powerchair Open 2025 aims not only to provide a platform for exceptional sporting performances, but also to contribute to the improvement of the game and the sharing of experiences between all participants. As part of this year's edition, we are proud to welcome EDU DAY, an educational day organised in participation with the IPCH International Committee, which will focus on developing coaching skills and improving the quality of this beautiful sport. This initiative reflects our efforts to take Powerchair Hockey to a higher level not only in the Czech Republic but also in other countries.

At the same time, we want this tournament to be a memorable event not only from a sporting point of view, but also because of the friendly atmosphere we are trying to create. Our goal is to provide all participants with maximum comfort, support and conditions for the best performance. We want every player, coach and assistant to take away not only valuable experience but also beautiful memories of their time in Pilsen.

I believe that together we will once again create an event that breaks down boundaries, brings people together and inspires them to strive to overcome their own limits.

Thank you for being part of this.

Lukáš Kroupa

*Chairman of the Organizing Committee
2nd International Powerchair Hockey Tournament, Pilsen 2025*



BASIC INFORMATION ABOUT THE TOURNAMENT:

ORGANISER: LENOXOS AND CZECH ADAPTIVE SPORTS

DATE: 17 APRIL 2025 - 21 APRIL 2025

SPORT HALL: TJ LOKOMOTIVA PILSEN, USLAVSKA, 326 00 PILSEN - CZECH REPUBLIC



WWW.PILSENPOWERCHAIROPEN.COM



PILSEN

POWERCHAIROPEN 2025

INVITATION

SPORT HALL

The TJ Lokomotiva sports complex in the Slovany district of Pilsen is one of the largest and most modern sports facilities in western Bohemia. This complex includes four sports halls, a gym, a wrestling room. There is a sufficient number of changing rooms with their own sanitary facilities, which ensures comfort for athletes and organizational teams.

For the needs of our International Powerchair Hockey Tournament, this facility offers the most appropriate conditions. The sports halls have a high quality game floor (sports wooden floor), wheelchair access, including accessible toilets, and changing rooms adapted for people with mobility limitations. These features meet the accessibility and comfort requirements for all tournament participants, which is a key aspect when organising parasport events.

As part of the Pilsen Powerchair Open 2025, matches will take place in two sports halls of the complex. Thanks to its state-of-the-art infrastructure and adaptation to the needs of people with disabilities, TJ Lokomotiva becomes the ideal venue for the organisation of this prestigious international event. Moreover, this event will contribute to the promotion of disability sport and support the efforts of the city of Pilsen.





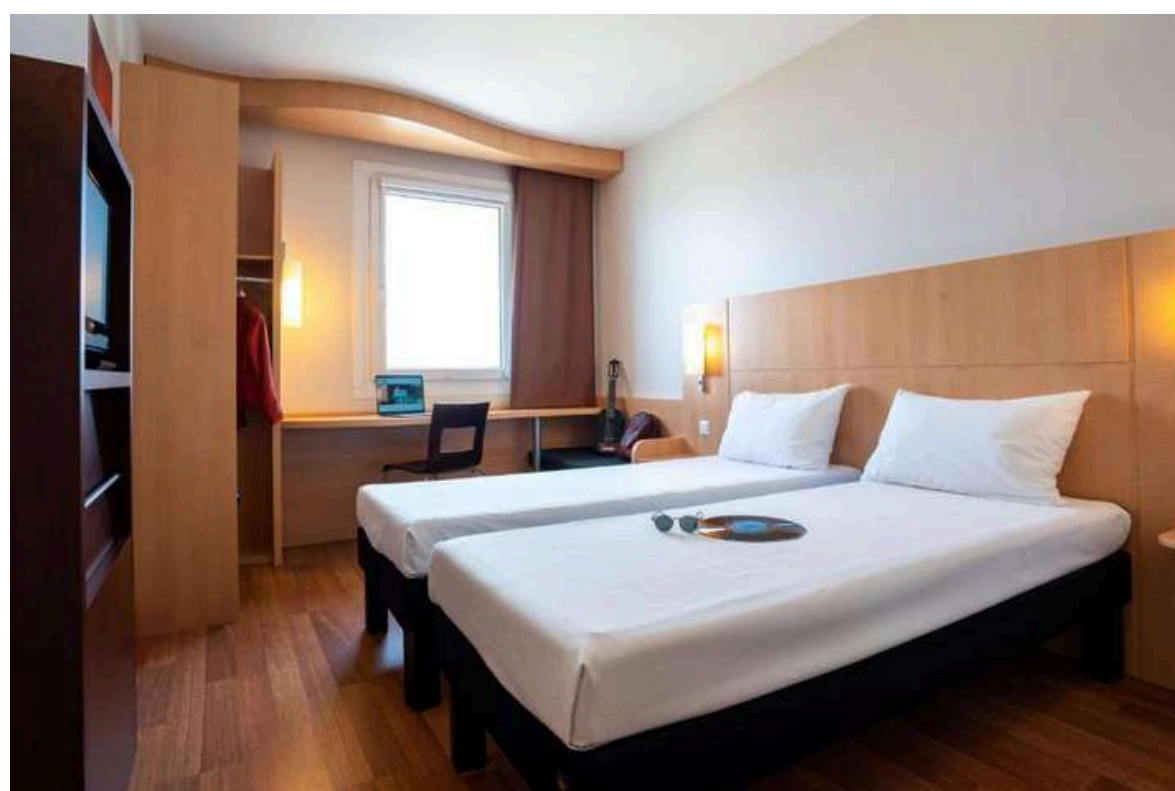
ACCOMMODATION

Accommodation will be provided for tournament participants in several hotels in Pilsen that meet the requirements for barrier-free access. Each participating team will have one wheelchair accessible room with wheelchair accessible room with bathroom, for the needs of the whole team, without accommodation of other persons.

Tournament participants will be accommodated in double rooms as standard. If individual participants have specific accommodation requirements (e.g. a higher bed, single room or lifting handicap facilities), please indicate these requirements in the entry form. Special requests may be charged by extra fees.

The organizer reserves the right not to accommodate additional requests if they are sent after the deadline for their submission.

HOTEL IBIS* - ACCOMMODATION FOR UP TO 3 TEAMS, DISTANCE TO THE HALL IS 6.3 KM**



PARKHOTEL** - ACCOMMODATION FOR 1 TEAM, DISTANCE TO THE HALL IS 5 KM**



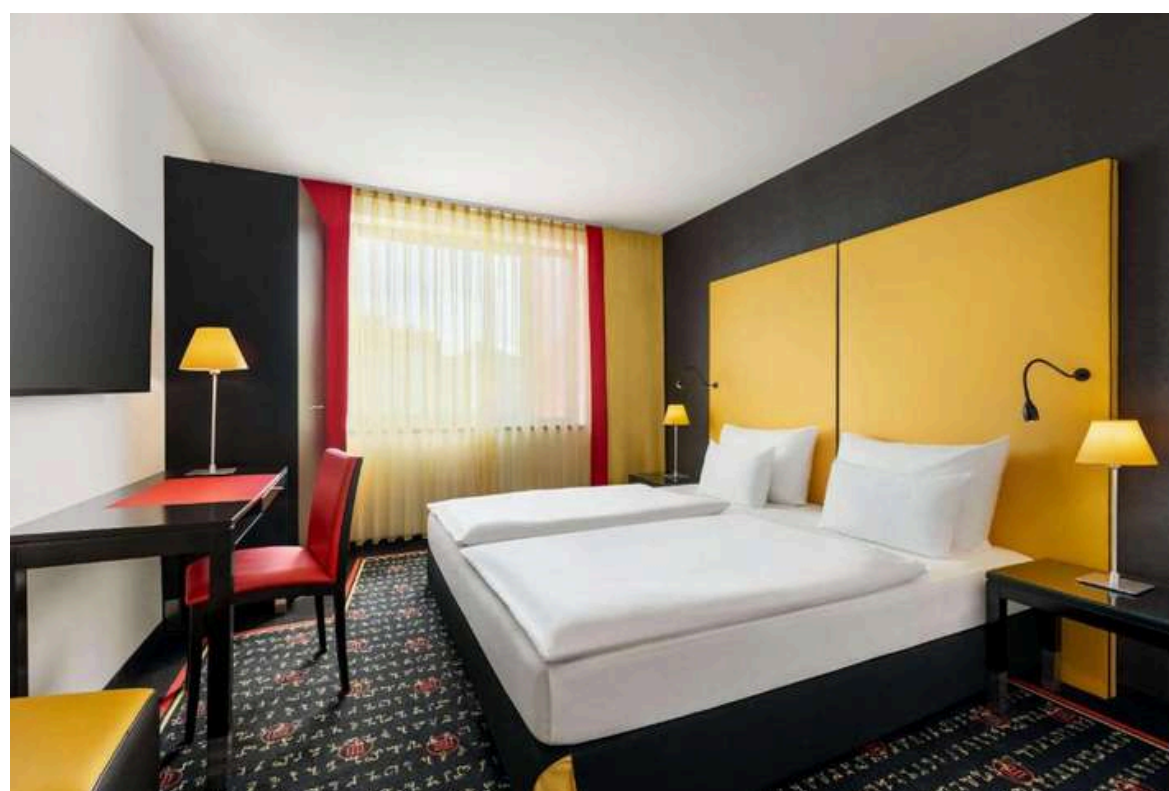


PILSEN

POWERCHAIROPEN 2025
INVITATION

ACCOMMODATION

VIENNA HOUSE**** - ACCOMMODATION FOR UP TO 2 TEAMS, DISTANCE TO THE HALL IS 1,5 KM



PROKOPAVKA SPORTS COMPLEX - ACCOMMODATION FOR UP TO 3 TEAMS, THE DISTANCE TO THE HALL IS 7 KM





PILSEN

POWERCHAIROPEN 2025

INVITATION

MEALS

Continental breakfasts will be served at the hotel, lunches will be baguettes. Dinner will be served at the hotel (except on arrival day). Opening and closing dinners will be held at DEPO 2015. Please indicate any dietary meal exceptions on the registration form. Drinks are not provided or paid for by the organiser throughout the event. However, they can be bought at all the places where the tournament program will take place.

We would like to invite all participants to support us in our goal to make the event environmentally friendly. Tap water is drinkable at all facilities, so we recommend bringing your own drinking bottle.



OPENING CEREMONY AND CLOSING CEREMONY

The Opening and Closing ceremonies 25 will take place in the unique space of DEPO2015.

This space, connecting culture with business, is known as the pillar of sustainability of the project Pilsen - European Capital of Culture 2015. The former depot of the city's transport companies now houses halls for interactive exhibitions, conferences, a theatre, a café and other attractive facilities. There are wheelchair accessible sanitary facilities.

Opening Ceremony includes Cultural programme, Gala dinner and the Tournament Draw.

Closing Ceremony will include Victory Ceremony, Individual awards, Gala dinner and Farewell Party.





EDU DAY - COACHING CLINIC – 18 APRIL 2025

There will be Coaching Clinic offered on Friday 18 April 2025. We recommend participants to arrive on 17 April 2025. Coaching Clinic will be run by IPCH Coach Expert. The Clinic is open for all who are interested in developing Coaching skills (coaches, players, assistants etc.)

Schedule:

9:00 – 12:30 – Theory Session

12:30 – 13:30 – Lunch

14:00 – 17:00 – Practice – Friendly Matches of mixed teams with Friendly Coaches

The aim of the Clinic is to enhance the coaching skills and to enable Teams to mix and play together as training opportunity. Inevitable aim of the clinic is also to enhance cooperation and friendship of players and team members. For language barriers there will be team delegates to remove them.

Entry fee – with EDU DAY - Coaching Clinic

The entry fee is set at 480€ per participant in double rooms (560€ in single rooms).

The entry fee includes:

- accommodation (4 nights) in a double room
- meals (3 x breakfast, 2x lunch, 3x dinner)
- entrance to the opening ceremony and the closing ceremony
- team delegate services
- transport from closing ceremony

Entry fee – without Edu Day

The entry fee is set at 360€ per participant in double rooms (420€ in single rooms).

The entry fee includes:

- accommodation (3 nights) in a double room
- meals (3 x breakfast, 2x lunch, 3x dinner)
- entrance to the opening ceremony and the closing ceremony
- team delegate services
- transport from closing ceremony





SCHEDULE

31. 01. 2025 – Teams - deadline to register – google forms

<https://forms.gle/VD4scrE5xzUtrTTz8>

15. 02. 2025 – LOC - notification of confirmation/non-confirmation of team participation

28. 02. 2025 – Teams – Entry Fee payment and sending Final Entry Form

17. 04. 2025 – Arrival of Teams participating at EDU DAY – Coaching Clinic

18. 04. 2025 – Coaching Clinic

Arrival of the teams without Coaching Clinic

Opening Ceremony and the Draw

19. 04. 2025 - Game day

20. 04. 2025 - Game day

Closing Ceremony

21. 04. 2025 - Departure

ENTRY FEE

The entry fee is set at EUR 360 per participant. The entry fee includes:

- accommodation (3 nights) in a double room
- meals (3 x breakfast, 2x lunch, 3x dinner)
- entrance to the opening ceremony and the closing ceremony
- services of a team delegate
- transport from closing ceremony





TRANSPORTATION

Transportation during the tournament is not provided by the organizer. Teams can make specific requests for transport during the event in the registration form. These requests will be addressed individually with the team. The organizer reserves the right to charge additional fees for providing transportation. The organizer will provide transportation only from the Closing Ceremony.



TOURNAMENT GAME SYSTEM

The maximum number of participating teams is 10, with a minimum of 5 teams. In case of higher interest, teams will be placed on the reserve list. One of the important criteria for inclusion is the date and time of registration (first come, first serve). Teams will be allocated into 2 groups. The teams will play matches each against each other within the group (on 19 April 2025), and matches for the final position (on 20 April 2025). The final playing system and match schedule will be determined according to the number of registered teams. The lineup of the groups will be determined by the Draw during the Opening Ceremony. The organizer reserves the right to change the composition of the groups (1 trade between groups).





REFEREES

Each participating team is obliged to nominate 1 referee for the tournament. The organizer sets the following conditions for the nomination:

- Only a referee who referees matches in your domestic competition (regardless of the level) can be nominated. The team must prove that the above condition is met by the confirmation of the relevant federation that governs Powerchair Hockey in the country.
- A referee cannot also be a player who participates in tournament matches.
- The organizer has the right to request a change in the referee's nomination.

In the case that the nominated referee cannot come with the team, the team can make a change. The substituted referee must meet the same conditions as the first referee. If the team arrives without the nominated referee, there is a refund of EUR 400.



17-21/4/2025

TOGETHER

WITHOUT BORDERS



WWW.PILSENPOWERCHAIROPEN.COM